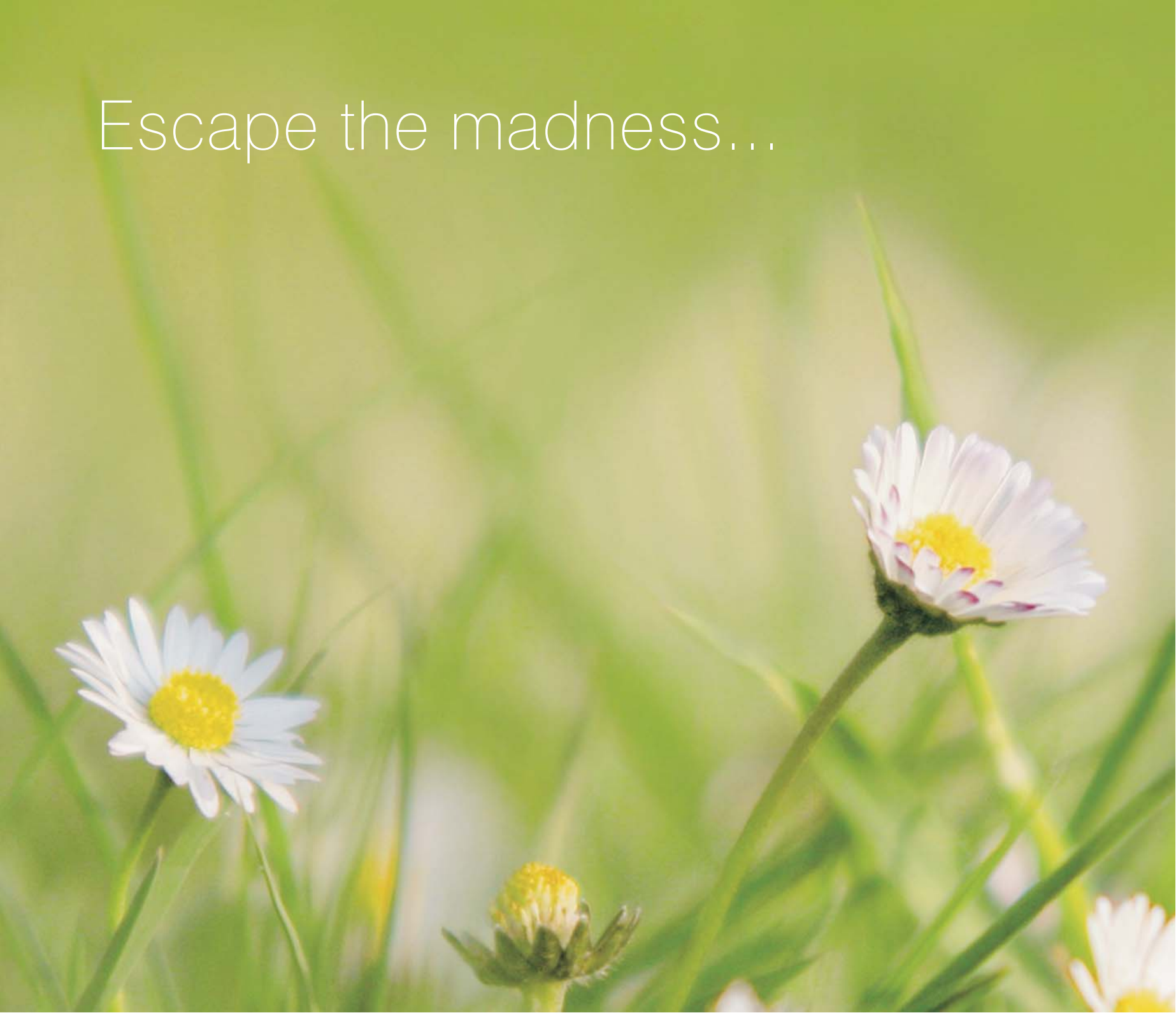




# Mill Meadow

Kingston St. Mary | Taunton | Somerset

Escape the madness...



Mill Meadow is the perfect place to escape the stress of modern living.

A rural retreat, nestling amongst the lush meadows of the Somerset countryside, at the foot of the stunning Quantock Hills (an Area designated as of Outstanding Natural Beauty). Mill Meadow is an exclusive gated and naturally landscaped development of ecologically sound holiday homes.

Many and varied landscapes and opportunities sit right on your doorstep, or you can simply relax and enjoy your tranquil surroundings.

The sustainable homes at Mill Meadow are crafted to order from Finland, made from slow grown pine and spruce and sourced from certified sustainable well-managed forests.

The contemporary designs we have chosen offer a modern and spacious home, flooded with light from the large glazed areas and yet wonderfully in touch with their natural surroundings.

Simply select your plot, chose and vary your design to suit your own personal preferences, and we will work with you to manage your build through to completion and even manage the letting of your new holiday home should you wish us to do so.

for the meadows...



# Mill Meadow







Mill Meadow is quietly tucked away in tranquil countryside alongside an established lake in the hamlet of Mill Cross, on the edge of the picturesque village of Kingston St. Mary, at the foot of the Quantock Hills.

The area is renowned for its beauty; it's charming country villages with excellent local pubs, delightful walks, local riding on bridleways or hill trails and fishing opportunities. Both Exmoor and Dartmoor are within easy reach, as are the north and south coasts, including the World Heritage Jurassic Coastline.

The county town of Taunton offers an excellent range of local facilities including shopping and leisure, fine dining and international cuisine, theatre, museums and county level cricket.

The M5 and A303 offer easy access to the delights of Somerset, Devon and Dorset, including stunning countryside and coasts and the vibrant cities of Exeter, Wells, Bristol and Bath.



### On your doorstep:

Kingston St. Mary	< 1 mile
The county town of Taunton	c.3 miles
Mainline Rail/M5 J25	c.3/5 miles
The Quantock Hills	< 1 mile
Exmoor National Park	c.12 miles
The West Somerset Coastline	c.15 miles
The Jurassic Coastline	c.30 miles

natures neighbour...



## A close-up photograph of a single yellow daisy flower with a dark brown center, lying on its side on a white, textured surface. The flower's petals are bright yellow and slightly ruffled. In the background, a portion of a gold-colored rectangular frame is visible against a light-colored wall.







Set in beautiful tranquil countryside, Mill Meadow provides contemporary ecologically sound living in a delightful rural location.

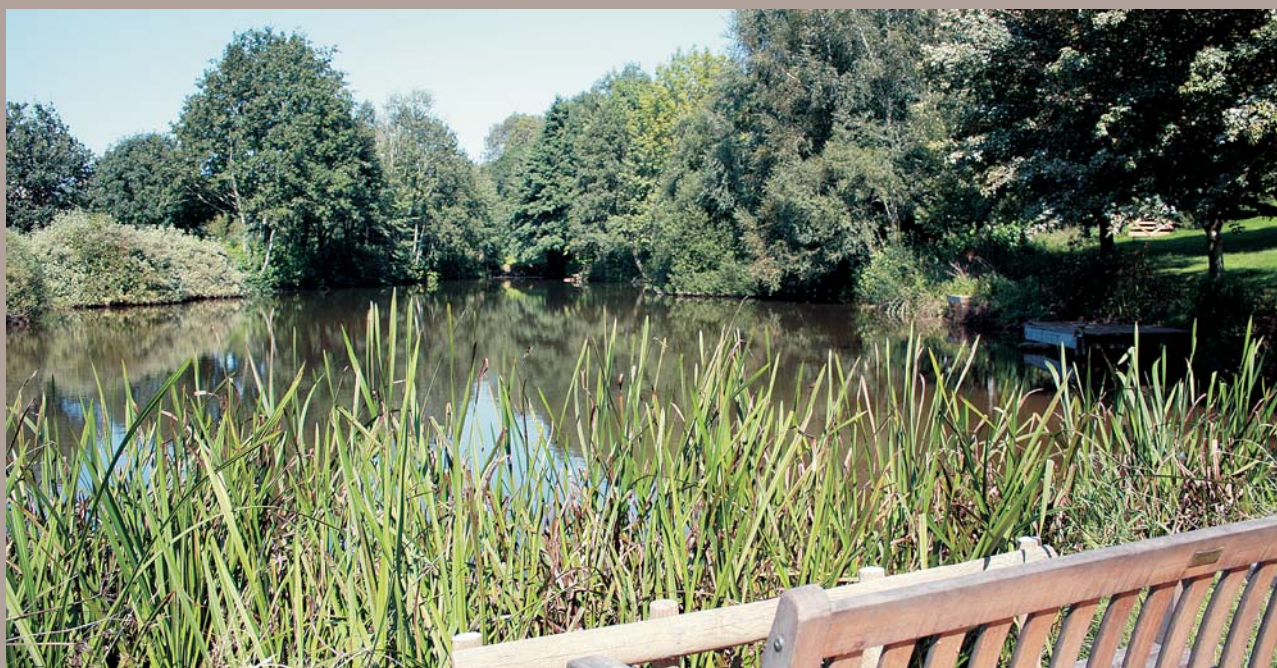
The sustainable homes at Mill Meadow are crafted to order from Finland, made from slow grown pine and spruce and sourced from certified sustainable well-managed forests.

Every effort has been made to source other materials from sustainable sources and to minimise transport wherever possible by using local craftsmen and suppliers.

The contemporary designs we have chosen offer a modern and spacious home, flooded with light from the large glazed areas and yet wonderfully in touch with their natural surroundings.

Sustainability has been at the heart of the design of Mill Meadow with features including ground and air source heat pumps, under floor heating, solar hot water, solar electric, green roofs, rain water harvesting, low energy lighting, energy efficient appliances, excellent levels of insulation and triple glazed windows.

We are privileged to live amongst such beautiful countryside and recognise our responsibility to care for our environment.



## Site Plan



with a clear carbon conscience...



# Ecologically Sound

## The best new green homes

*The Independent, House & Home*

At Mill Meadow we are continually reviewing emerging technologies to ensure that we can both offer and incorporate the most modern and 'green' initiatives into each Eco holiday home.

Features can include:

- Solar Hot Water
- Solar Electricity
- Rain Water Harvesting
- Green Roofing
- Underfloor Heating
- Low Energy Lighting
- Efficient Appliances
- Triple Glazed Windows
- Excellent Levels of Insulation
- Ground and Air Source Heat Pumps



Come and experience for yourself the uniqueness of



# Mill Meadow

Kingston St. Mary | Taunton | Somerset



We are privileged to live amongst such beautiful countryside and recognise our responsibility to care for our environment.

To arrange a viewing or to discuss in more detail please telephone us direct

On 01823 451 256 or 07779 651 911

Christopher J Hayns  
Managing Director

**Mill Meadow**  
Parsonage Lane  
Kingston St. Mary  
Taunton  
Somerset  
TA2 8HL

[chris@millfieldecoprojects.co.uk](mailto:chris@millfieldecoprojects.co.uk)

[www.millmeadow.co.uk](http://www.millmeadow.co.uk)

or contact our selling agents

**GREENSLADE TAYLOR HUNT**

NEW HOMES

01823 277 121

[www.gth.net](http://www.gth.net)

Any photographs or illustrations used throughout this brochure are for illustrative purposes only, actual finishes, details and landscaping may vary during the course of construction. All areas, dimensions, distances and measurements shown are approximate and the layout shown is given as a guide only. These details should not be relied upon as from time to time it may be necessary to change our plans. This does not affect our obligations under the Property Misdescriptions Act 1991, and every effort has been made to ensure that any statements in this brochure are not false or misleading in any way.

Please note that the site plan is not to scale and again our plans may change from those shown at this time. The site plan does not form part of any contract for sale.

Photographs supplied with kind permission from Mill Meadow, The Marketing Group & The Quantock Hills AONB Service.

Designed and produced by The Marketing Group Media, Design & Print. [www.tmgmarketing.co.uk](http://www.tmgmarketing.co.uk).

100% recycled